

NORTH COUNTRY
by Heartland

**Genuine Livability,
Unmatched Quality.**



NORTH COUNTRY

by Heartland



SEVEN FOOT CEILINGS

You'll enjoy the open, spacious feeling that you get in each NORTH COUNTRY travel trailer made possible by the full seven foot ceiling height that makes you feel like your at home! Taller ceilings mean six foot head clearance in the slide-rooms on all slide out models.



FREE-STANDING DINETTE TABLE

The free-standing dinette table offers maximum flexibility. You can even take the table outside for lunch to enjoy outdoors.

CREATIVE, FUNCTIONAL FLOORPLAN DESIGNS

The all-new NORTH COUNTRY features exciting new interior concepts offering loads of rich cabinets, plush interior furnishings, abundant counter top space, and several windows that provide a great view of your surroundings and living room design that are perfect for entertaining guests or relaxing while on vacation.



FULL SEVEN (7) FOOT - 84"



STEEL BALL BEARING DRAWER GUIDES
Smart designs - NORTH COUNTRY leads the way with convenient and helpful concepts like full-extension steel ball bearing drawer guides. The extra strong drawer guides allow us to offer larger drawers which extend past the cabinet face for maximum usage.



BONUS STORAGE
Everywhere there is useful storage we have made it accessible with a door or open face.



RESIDENTIAL 50/50 SINK
No more little travel trailer sink, a real sink for a real kitchen



ROOMY BEDROOMS

Large beds and room to get around them make North Country bedrooms comfortable and very livable.

Extra storage is provided by built-in storage under the bed that extends to the exterior pass through for convenient access without the need to go outside in the rain.



MINERAL

LUXURIOUS DECORS

Choose from three elegant decors featuring durable fabrics on the furnishings and window coverings.



MOCHA

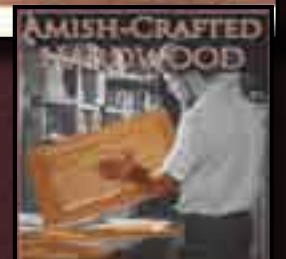


MULBERRY



HARDWOOD CABINET DOORS

Be sure to check when shopping whether other brands have the typical, thin hardwood veneers over chipboard - or real Amish-crafted hardwood doors like NORTH COUNTRY.





ENTERTAINMENT SYSTEM

Entertain family and friends with our full featured AM / FM, CD / DVD, MP3 Player with speaker selectors for inside and outside speakers.



RADIUS EDGE WOOD TRIM, attention to detail and craftsmanship allows us to produce a Gimp Free, high quality, clean finish on every North Country.

BEDROOM SIDE



BEDROOM SIDE



ROTATING TV CABINET

Easy to operate and is a finished cabinet that blocks the view through to the bedroom providing privacy and a very finished look.





Aerodynamic Front Profile:

Decreased wind resistance while traveling, helping to maximize every precious gallon of gas. Enjoy better handling and great looks brought to you by our sleek front profile. Radius diamond plate debris guard transitions to a tapered, radius metal skirt.



RADIUS ENTRY STEPS:

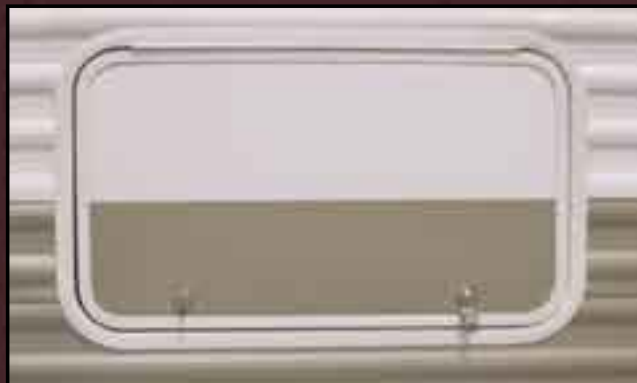
These steps provide a safe entry into the North Country. The radius front edge eliminates the sharp corners and gives you more step for added safety.

Heartland's optional ToyLok is perfect for quickly and easily securing bikes, grills, furniture and anything else that needs to be secured when you leave your site unattended.



QUALITY BAGGAGE DOORS:

1. Painted aluminum door frame - won't chalk or oxidize and looks great.
2. Enhanced color band to match body metal.
3. Clean installation with no oozing putty.
4. NO screw cap molding - Just a solid frame.



RELIABILITY:

1. Automotive rubber bulb seal prevents leaks and lasts for years of use.
2. Clean one piece deep flange finishes the baggage door opening, no cheap gimp or exposed painted wood.
3. Hidden, side mounted screws provide extra strength and clean appearance.



EASY LUBE AXLES:

The name says it all "Easy Lube", low maintenance axles means less maintenance time and more relaxing time. Standard on all North Country travel trailers.



18" overhead cabinet doors with taller cabinets and larger openings (as opposed to 15" or smaller) mean more valuable interior storage space for all of the camping necessities.



Every North Country floorplan has a designated compartment for a useful size trash can.

Unlike our competitors whose roof rafters are simply stapled, North Country's roof rafters are screwed securely to the sidewalls, meaning no worries about the structural integrity and solidity of North Country's roof system!



Our construction methods using screws and additional hurricane style strapping creates a unibody out of the floor, sidewalls and roof. This insures a tight fitting, long lasting, strong structure for years of use and enjoyment.

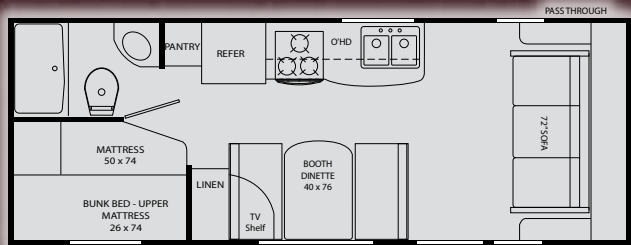


Nonmetallic ducts eliminate condensation buildup in the attic that can cause water damage.



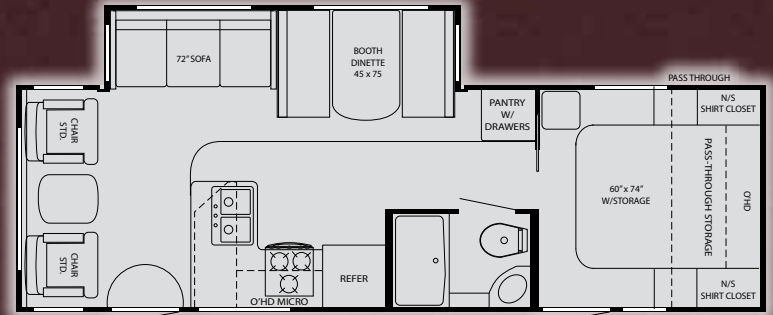
RESIDENTIAL TOE KICK:

Our toe kick helps protect the cabinet faces from scuffs and chips while allowing you to stand closer to the sink without leaning over.



19FS

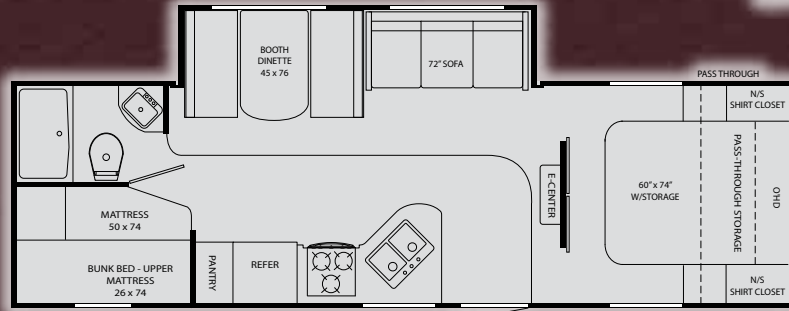
**Genuine
Livability,
Unmatched
Quality.**



26 SRL



22FB



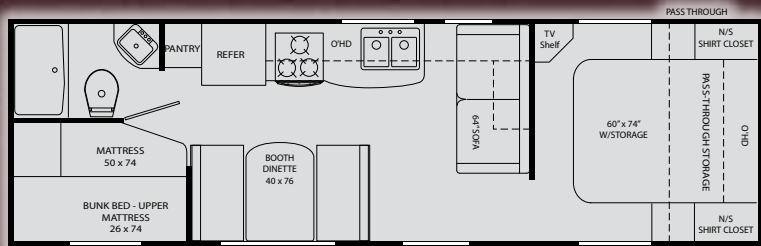
27BHS



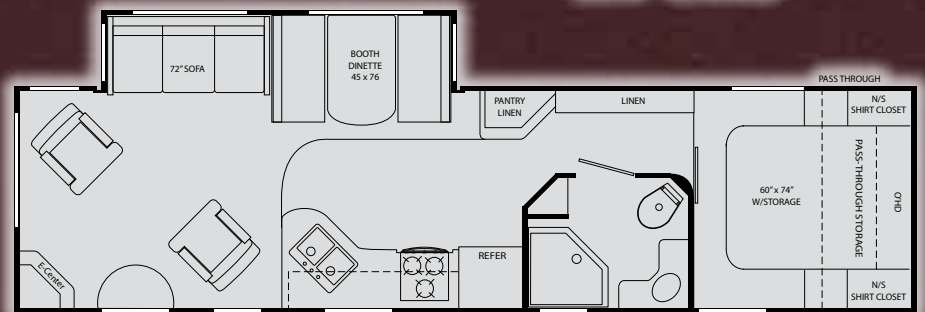
24RKS



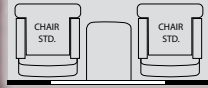
28 SRL



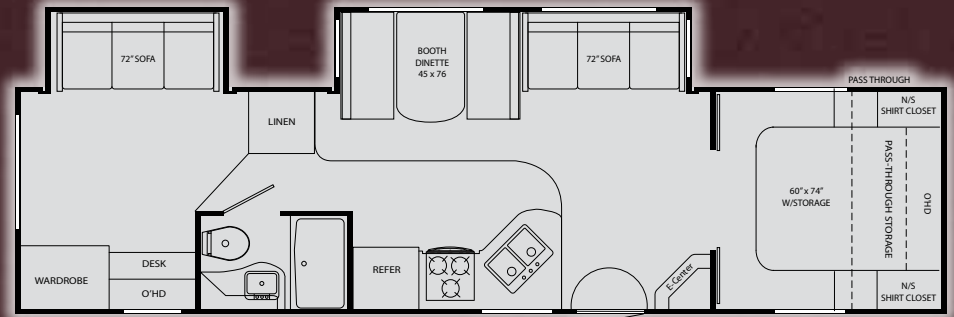
26BH



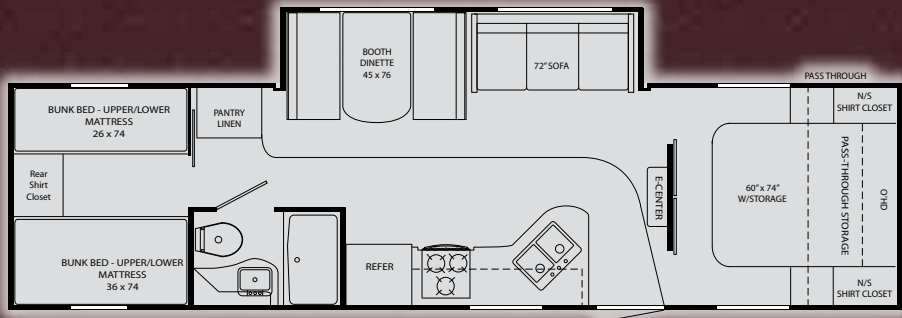
29RLS



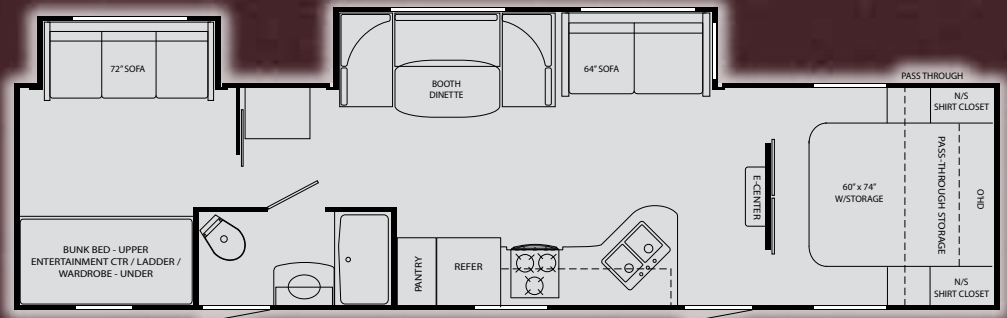
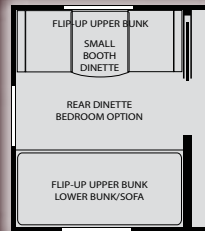
29RKS



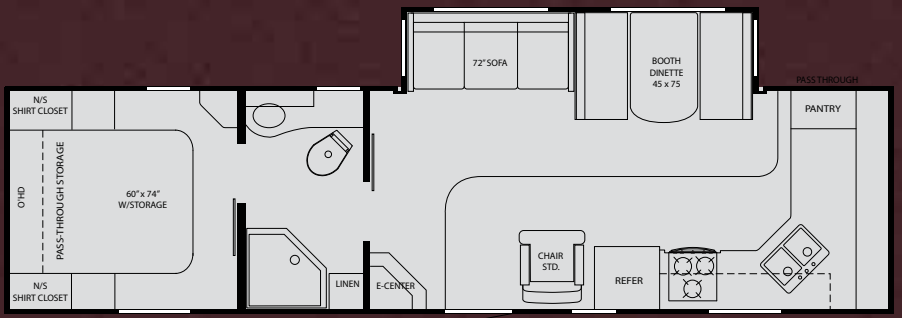
31BHDS



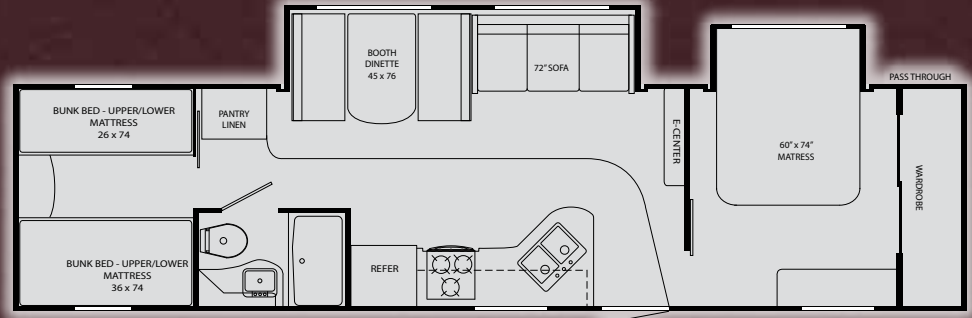
30BHS



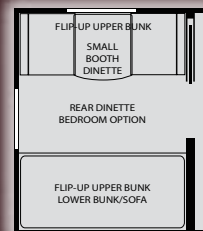
32BHDD



30FKS



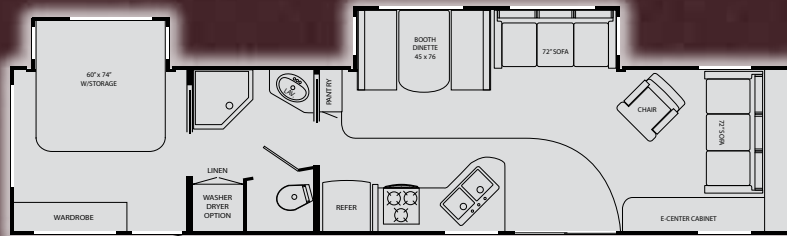
32DSBS



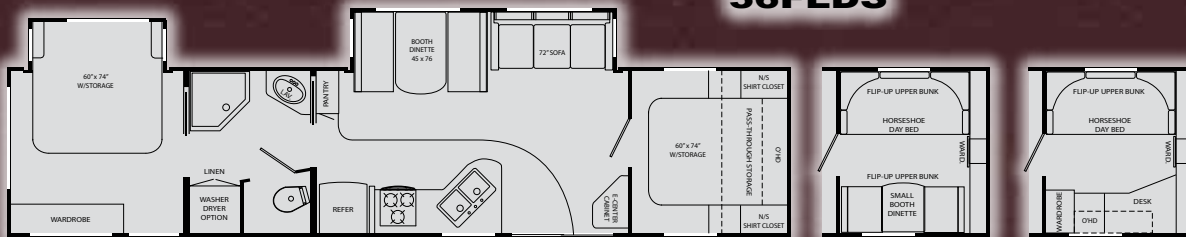
NORTH COUNTRY
by Heartland

MODEL	19 FS	22 FB	24 RKS	26 BH	26 SRL	27 BHS	28 SRL	29 RLS	29 RKS	30 BHS	30 FKS	31 BHDS	32 BHDD	32 DSBS
GVWR	6,900	6,900	10,400	6,900	10,400	10,400	10,400	10,400	10,400	10,400	10,400	10,400	10,400	10,400
Dry Weight	4,904	4,676	6,496	5,016	6,756	6,716	7,310	7,632	7,534	7,196	TBD	8,358	8,766	TBD
Hitch Weight	604	460	507	640	630	751	918	972	748	780	TBD	1,020	1,070	TBD
Length	24' - 7"	26' - 8"	29' - 0"	29' - 8"	29' - 6"	30' - 7"	33' - 5"	35' - 0"	34' - 10"	34' - 6"	TBD	35' - 11"	37' - 10"	TBD
Interior Height	7ft.	7ft.	7ft.	7ft.	7ft.	7ft.	7ft.	7ft.	7ft.	7ft.	7ft.	7ft.	7ft.	7ft.
Axles	2 x 3,500	2 x 3,500	2 x 5,200	2 x 3,500	2 x 5,200	2 x 5,200	2 x 5,200	2 x 5,200	2 x 5,200	2 x 5,200	2 x 5,200	2 x 5,200	2 x 5,200	2 x 5,200
Fresh Tank	37 gal.	37 gal.	37 gal.	37 gal.	50 gal.	50 gal.	50 gal.	50 gal.	50 gal.	50 gal.	50 gal.	50 gal.	50 gal.	50 gal.
Gray Tank	37 gal.	37 gal.	37 gal.	37 gal.	37 gal.	37 gal.	37 gal.	37 gal.	37 gal.	37 gal.	37 gal.	37 gal.	37 gal.	37 gal.
Black Tank	37 gal.	37 gal.	37 gal.	37 gal.	37 gal.	37 gal.	37 gal.	37 gal.	37 gal. x2	37 gal.	37 gal.	37 gal.	37 gal.	37 gal.
Furnace BTUs	35,000	35,000	35,000	35,000	35,000	35,000	35,000	35,000	35,000	35,000	35,000	35,000	35,000	35,000
AC BTUs	13,500	13,500	13,500	13,500	13,500	13,500	13,500	13,500	13,500	13,500	13,500	13,500	13,500	13,500
LP Capacity	2 x 20 lb.	2 x 20 lb.	2 x 20 lb.	2 x 20 lb.	2 x 20 lb.	2 x 20 lb.	2 x 20 lb.	2 x 20 lb.	2 x 20 lb.	2 x 20 lb.	2 x 20 lb.	2 x 20 lb.	2 x 20 lb.	2 x 20 lb.
Water Heater	6 gal.	6 gal.	6 gal.	6 gal.	6 gal.	6 gal.	6 gal.	6 gal.	6 gal.	6 gal.	6 gal.	6 gal.	6 gal.	6 gal.

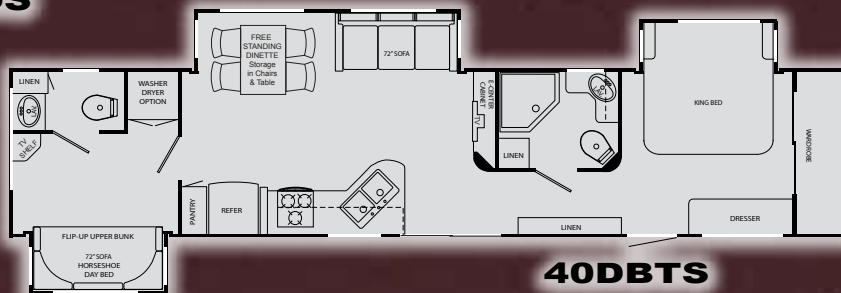
XLT EXTENDED STAY MODELS



36FLDS



38DBDS



40DBTS

MODEL	36 FLDS	38 DBDS	40 DBTS
Length	TBD	40' - 10"	42' - 9"
Interior Height	7ft.	7ft.	7ft.
Axles	2 x 6,000	2 x 6,000	2 x 6,000
Fresh Tank	50 gal.	50 gal.	50 gal.
Gray Tank	2 x 37 gal.	2 x 37 gal.	2 x 37 gal.
Black Tank	37 gal.	37 gal.	2 x 37 gal.
Furnace BTUs	40,000	40,000	40,000
AC BTUs	13,500	13,500	13,500
LP Capacity	2 x 20 lb.	2 x 20 lb.	2 x 20 lb.
Water Heater	10 gal.	10 gal.	10 gal.

XLT Extended-Stay Standard Highlights

- 10 Gallon DSI Gas/Electric Water Heater
- 60x76 Sliding Patio Door
- Detachable Hitch
- 50 Amp Electrical Service w/ 65 Amp Converter
- Free Standing Dinette w/ 4 Chairs
- Vertical Blind for Patio Door
- Washer/Dryer Prep
- Residential 110V Refer
- Residential Free-Standing Range

Construction Features

- .024" Aluminum Exterior Skin
- R-7 Fiberglass Insulation Sidewall, Roof, and Floor
- 5/8" Main Floor Decking
- Roof Rafters Wood Tapered 4-1/2" Trusses
- 1/2" Dinette, Bed and Bunk Platforms
- Unique Aerodynamic Radius Front Profile
- Wall Studs on 16" Centers
- Electric-Powered Slide Rooms (all slide-out models)
- Prep for Rear Ladder
- Fully Walkable Roof w/ 3/8" Decking
- One-Piece, Seamless Rubber Roof
- 8' Exterior Width
- 84" (7ft.) Interior Ceiling Height
- 71" (6ft. 1in.) Slide-Room Ceiling Height
- 2" x 3" Longitudinal Floor Joists on 16"-18" Centers
- Cambered Structural Steel I-Beam Frame

Heat, Air, Power and Water Equipment

- Hook-Up for City Water
- Systems Monitor Panel
- 12V Demand Water Pump
- 13.5 Central A/C w/ Louvered Directional Ceiling Vents & Wall Thermostat.
- Fast-Blast A/C Grill
- 12V Electrical System w/ Deluxe 110V 45-Amp Power Converter
- 6 Gal. Gas/Electric DSI Hot Water Heater
- 30-Amp Power Cord
- 110V GFCI Protected Exterior Receptacle
- Auto-Ignition Furnace with Wall Thermostat (35k)
- In-Floor Ducted Heat
- ABS Holding Tanks
- Water System Winterization Kit
- Water Heater Bypass

Bathroom Equipment

- Shower Curtain with Curved Shower Track for Tubs

- Glass Door for Neo-Angle Showers
- Bathroom Power Vent
- Bathroom Door Casing
- Bar and Towel Ring
- Marine Toilet with Foot Flush
- Toilet Paper Holder
- Large Sink in Bathroom
- Medicine Cabinet w/Mirror
- Vinyl Flooring
- Flat Panel Bath Door

Standard Kitchen Equipment

- Microwave Oven with Carousel
- High-Rise Faucet
- Acrylic Residential-Style Sink (50/50)
- 3-Burner Cook Top w/ HO Front Burner and Piezo Igniter
- Range Hood w/Light and Exhaust Fan
- Extra Large Picture Window at Dinette
- Ball Bearing Drawer Guides
- Spice Rack, Built-In Under Kitchen Sink (select models)
- Large Oven
- Arched Raised Panel Kitchen Overhead Cabinet Doors
- Trash-Can Cabinet in Kitchen
- Double Door Refer
- Paneled Refer Front

Standard Bedroom Equipment

- Shirt Wardrobe in Bedroom
- Innerspring Mattress (select models)
- Foam Mattress for Bunk Beds
- Bedsread
- Carpet w/ Padding (select models)
- TV Shelf w/ Hook-Up
- Under-Bed Storage w/ Gas Struts
- Bi-Fold Privacy Door (select models)

Standard Exterior Equipment

- Diamond Plate Lower Front
- 15" Radial Tires w/ White Steel Rims (slide models only)
- Front Hitch Light
- 2 Outside Speakers on Door Side
- Deluxe Patio Awning

- ABS Propane Gas Bottle Cover
- Bumper w/Drain Hose Carrier, End Caps
- White Plastic Entry Grab Handle
- Lighted Pass-Thru Exterior Storage
- Radius-Cornered Baggage Doors
- Straight Axles w/ Electric Brakes
- E-Z Lube Axles
- Painted Lower-Bodyside Metal
- Radius Painted Lower-Bodyside Skirt Metal & Matching Door Stripping
- Amber Patio Light w/ Inside Switch
- Radius-Cornered Fiberglass Entrance Door w/ Screen Door
- Molded Rain Guttering w/ Drip Spouts
- Radius Retractable Entrance Step (Dbl: non-slide / Triple: slide)
- Black Framed Radius Windows

Standard Interior Equipment

- Wrapped Slide Fascia
- OH Cabinet Over Sofa in Super-Slides
- Solid Wood Drawer Fronts
- Radius Dinette Booth Backs (top) w/ 2 Doors on the Ends
- Extra Large 40"x76" Dinettes in Non-Slide Models
- Extra Large 45"x76" Dinettes in Super-Slide Models
- Multi-Purpose Inside/Outside Dinette Table
- Double Light Over Sofa and Dinette
- Full Width (72") Sofas (select models)
- Convertible Sofa
- AM/FM/CD w/2 Speakers
- Cable TV Hook-Up w/ RG6 Coax Cabling
- Carpet w/ Padding (select models)
- O.H.C. Above Sofas in Sofa-Slides
- Roof Mounted Antenna for Radio
- Swivel rocker(s) (1 or 2 on select models)
- Crank-Up TV Antenna w/ Signal Booster
- Fabric Covered Box Valances with Lambrequin Legs
- Mini-Blinds thru-out
- Wallpaper Border

Capacity

- Fresh Water 37 gal - Non Slides
- Fresh Water 50 gal - Slide Models
- Black water 37 gal
- Grey 37 gal
- 20 lb LP Gas Bottles w/ Auto Changeover

Standard Safety Equipment

- Propane Alarm
- Break-Away Switch
- Dead-Bolt Lock on Entrance Door
- Dual Hitch Safety Chains
- Smoke Alarm
- Multiple Egress Windows
- Fire Extinguisher
- Tinted Safety Glass Windows
- Carbon Monoxide Alarm

OPTIONAL LS Advantage Package:

- Heated and Enclosed Underbelly
- Skylight in Shower
- Porcelain Stool w/ Foot Pedal (where avail.)
- Six Panel Bath Door
- Arched Raised Panel Cabinet Doors Throughout
- Bedroom Roof Vent
- Sliding Pocket-Style Doors (select models)
- Chrome Hub-Caps
- Folding Grab Handle at Entry Door
- Night Shades in LR
- Designer Slide-Room Fascia
- Exterior "LS" Decals





Heartland Recreational Vehicles
1001 All-Pro Drive • Elkhart, IN 46514 • 574-262-5992

Community. Convenience. Close-to-home.

Where you purchase your recreational vehicle is ultimately your decision but Heartland urges you to consider buying at your local dealer. Dealers are part of your community, providing jobs and contributing to your local economy. These dealers are under obligation to provide warranty service for products they sell, but are not legally required to service products purchased from other dealers. At some point, you may need to return to the dealer you buy from - why not stay close to home? After all, home is where your Heartland is!

BENEFITS OF PURCHASING YOUR RV LOCALLY:

- You enjoy valuable relationship building with Dealer Representatives, close to your home, who will explain the features and benefits of the product.
- You receive a full product orientation prior to delivery, which includes hands-on directions for many of the coach's systems and functions. You are also introduced to the Dealership's Service/Parts/Warranty personnel who are at the ready to help you with any issues you may encounter, now and in the future.
- You enjoy customer PRIORITY. Dealerships generally service their purchasing customers first - others may experience long delays and miss opportunities to use their RV. What is it worth for you to have a dealership's full attention and motivation to satisfy you when you need service – in a timely manner?
- Valuable TAX dollars and jobs stay in YOUR community which pays for your roads, schools, police and fire departments.

DON'T UNDERESTIMATE CUSTOMER SERVICE AND PERSONAL CARE!

For Canadian Residents: If you purchase an RV out-of-country, there are additional fees, taxes and inspections that must be met before bringing your product home. Your local Canadian dealers are experts in these provisions.

Your Authorized Heartland Dealer:

www.HEARTLANDRVs.com

Experience:
 Product Walk-Through Videos
 Side By Side Comparisons
 Feature Videos • Photo Galleries
 Virtual 360° Tours
 Detailed Floor Plans
 News • Testimonials
 Customer Service
 Service Locator
 Owners Club • More
 at our Informative Web Site

CALL DIRECT FOR DIRECT RESULTS!	
TOLL FREE & WARRANTY PHONE NUMBERS:	
ATWOOD	1.800.843.1219
B & B	1.574.269.7838
CHENG	1.877.294.8997
DOMETIC	1.800.544.4881
LIPPERT	1.866.524.7821
NORCO	1.800.347.2232
SHUR-FLW	1.800.854.3218
TRED TIRE	1.800.537.2925
A.S.A.	1.800.688.3135
PROGRESSIVE	1.269.781.4241
ATWOOD	1.866.869.3118
SUBURBAN	1.423.775.2131
SWAN	1.800.228.7926
B & B	1.574.269.7838

Call Direct, Fast Results! 800# LABEL IN EVERY HEARTLAND

We provide a convenient sticker in each coach listing the warranty phone numbers of our most common vendor partners so that if you choose to, you may work directly with them to more quickly resolve issues or obtain replacement items.



HEARTLAND CUSTOMER SERVICE WE'VE GOT YOUR BACK!

Over 40 men and women located in a dedicated facility servicing our customers every day. With a dealer network of over 400 locations across the U.S. and Canada, you're never far from an authorized Heartland dealer.

Product information is as accurate as possible as of the date of publication of this brochure. Due to Heartland's commitment to continuous product improvement - floorplans, materials, components, features, specifications, options, etc. are subject to change without notice or obligation to Heartland Recreational Vehicles.
Tow Vehicle Caution: Owners of Heartland recreational vehicles are solely responsible for the selection and proper use of tow vehicles. All customers should consult with a motor vehicle manufacturer or their dealer concerning the purchase and use of suitable tow vehicles for Heartland products. Heartland disclaims any liability or damages suffered as a result of the selection, operation, use or misuse of a tow vehicle. Heartland's limited warranty does not cover damage to the recreational vehicle or the tow vehicle as a result of the selection of the tow vehicle.
 See your nearest Heartland dealer to review a current model. 45,000 LITHO 1/09